

CONDISEÑO
ARQUITECTOS



www.condiseno.co



CONDISEÑO
ARQUITECTOS



SECCIÓN LONGITUDINAL EXISTENTE



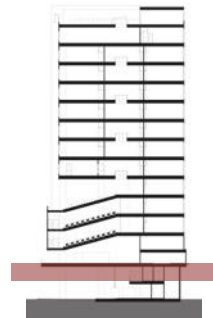
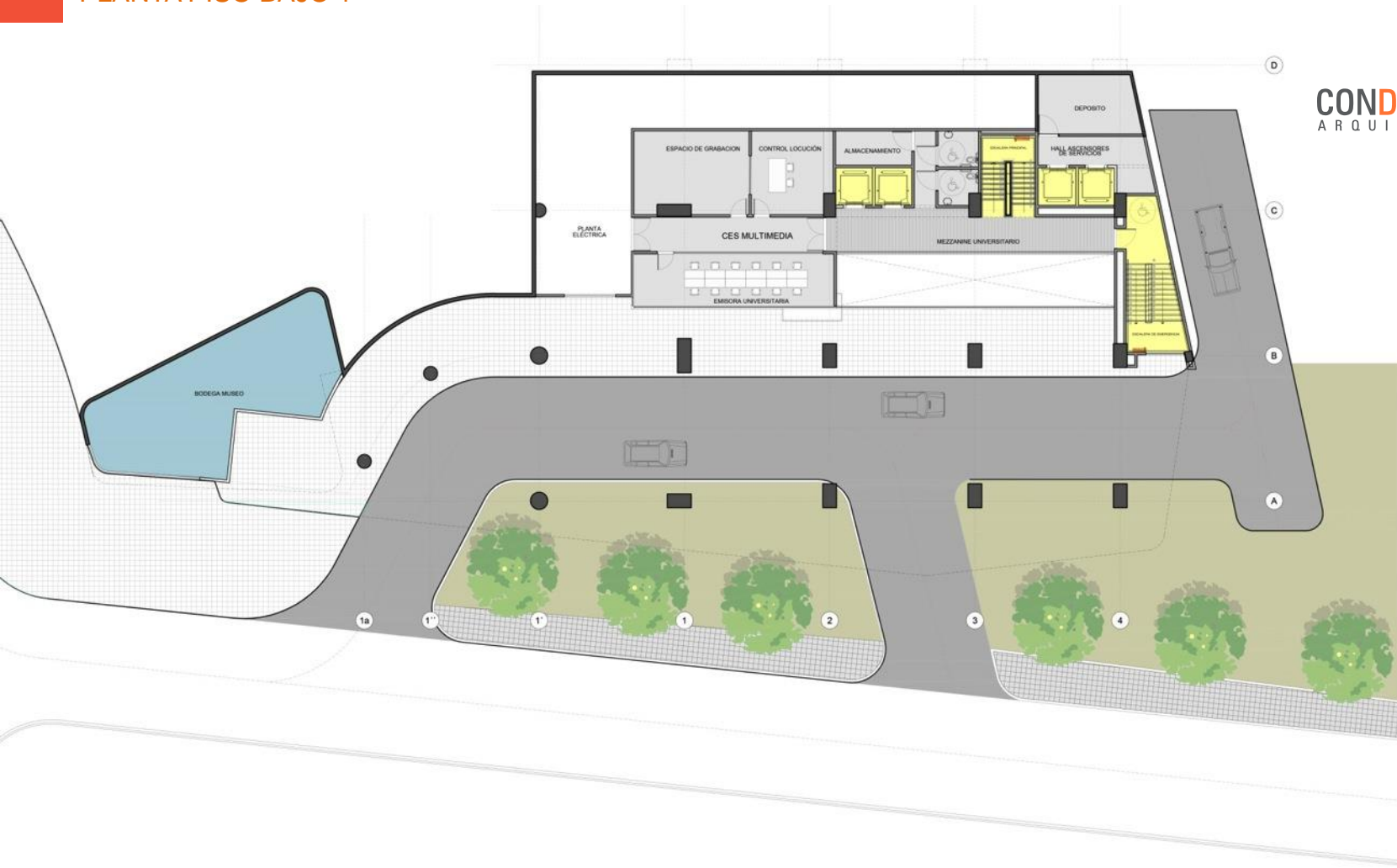
SECCIÓN LONGITUDINAL PROPUESTA



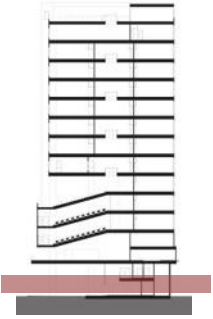
PROPUESTA URBANA PLAZA DEL ESTUDIANTE



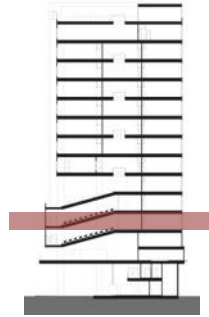
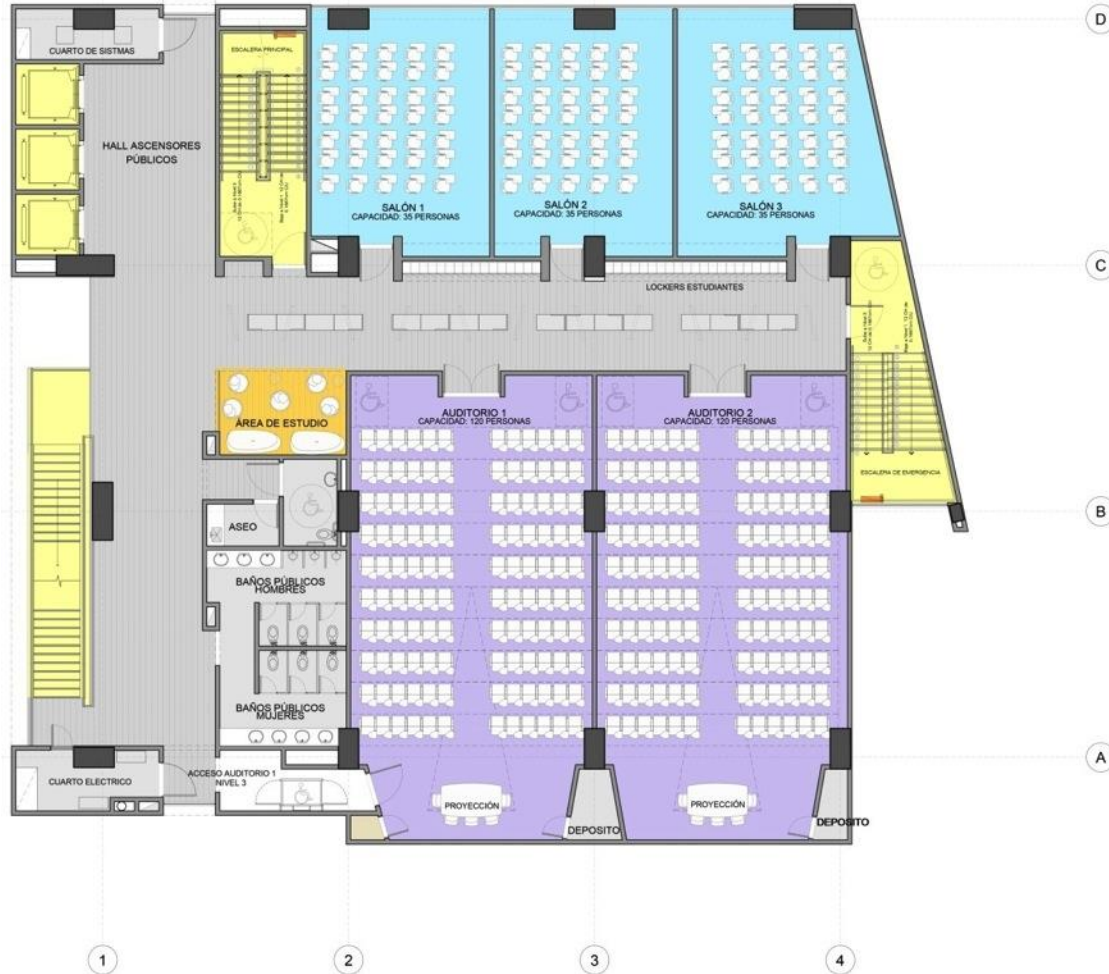
PLANTA PISO BAJO 1



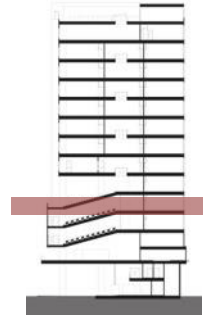
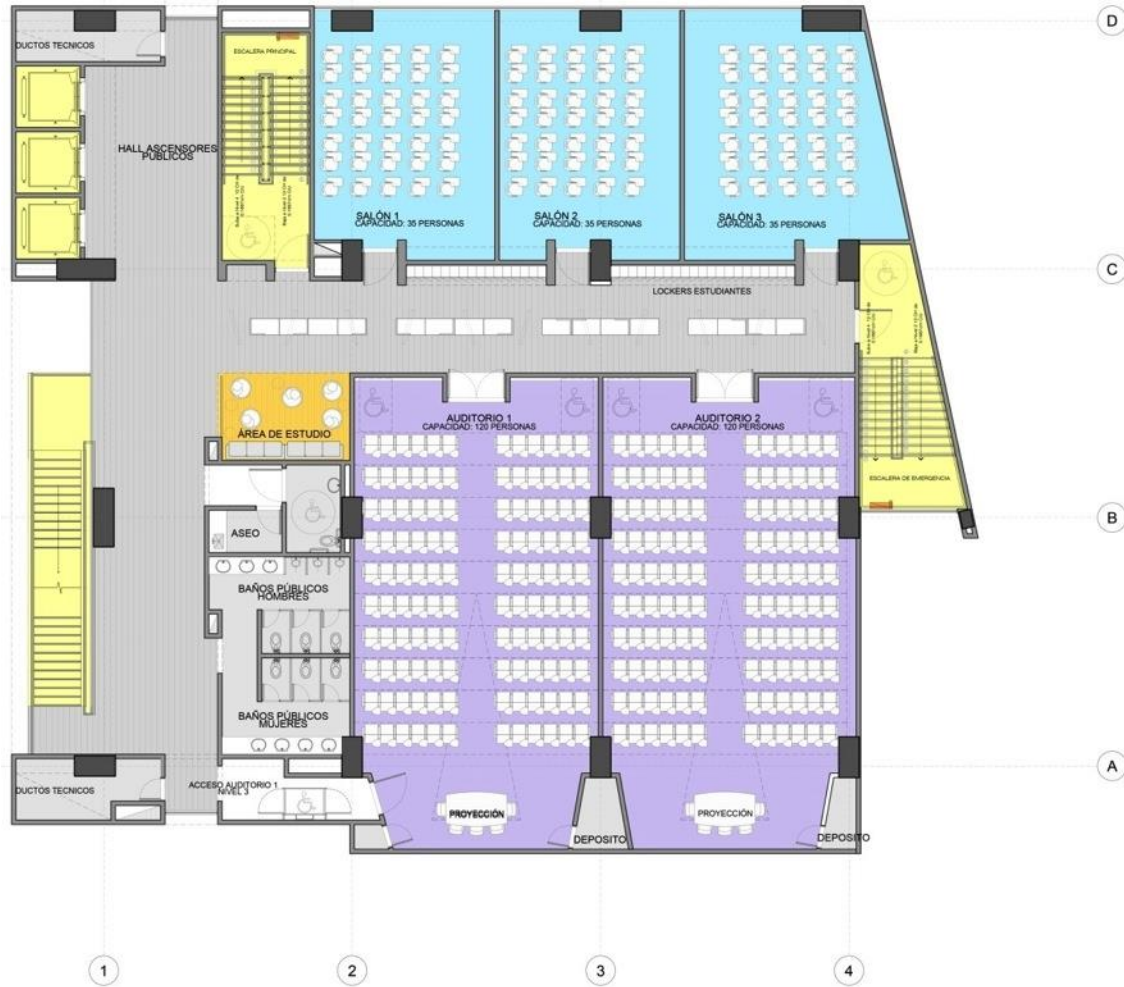
PLANTA PISO BAJO 2



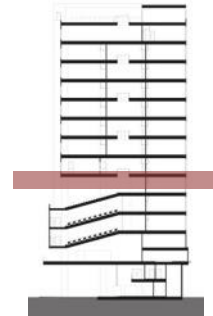
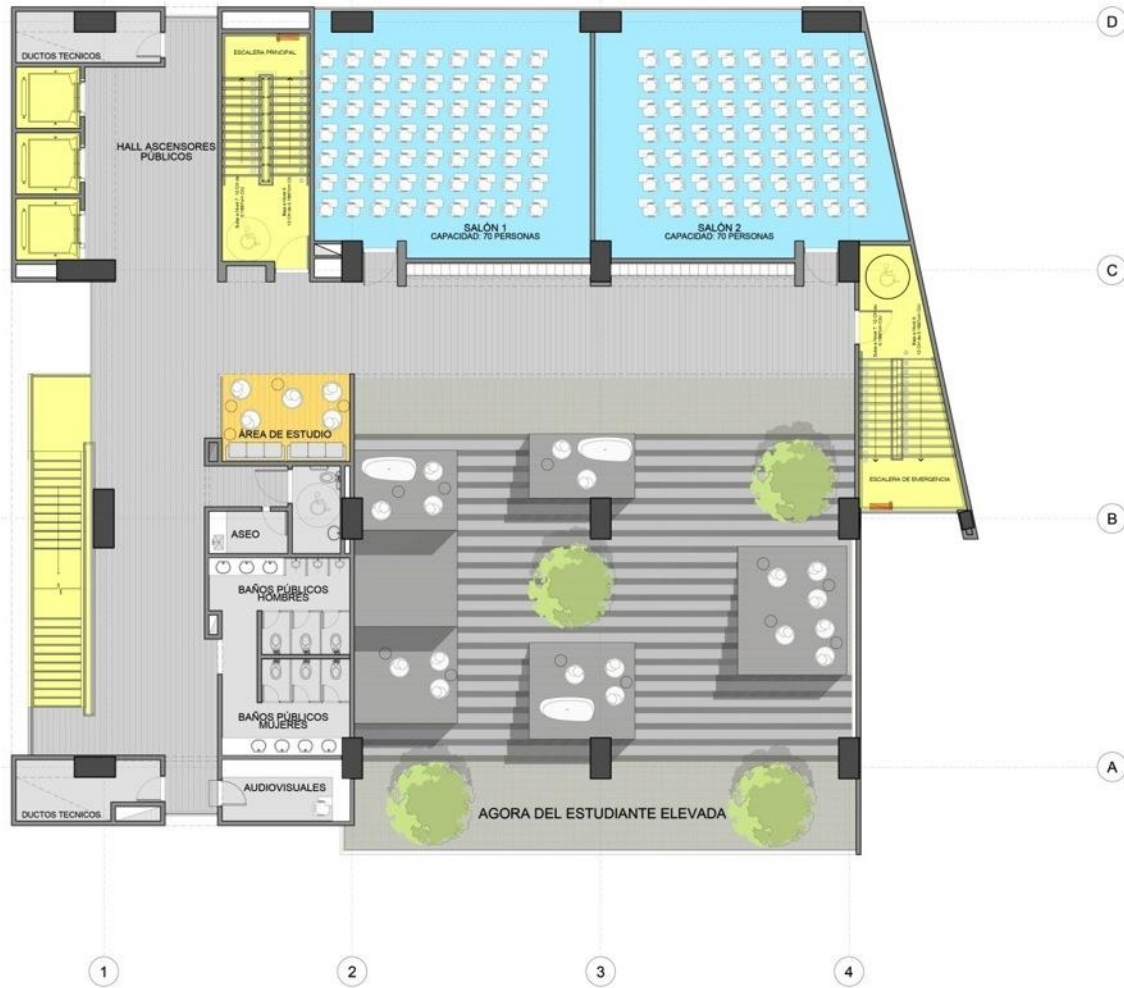
PLANTA PISO 2



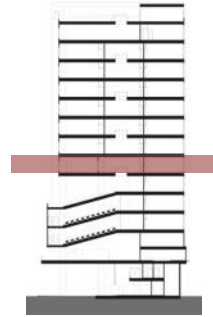
PLANTA PISO 3



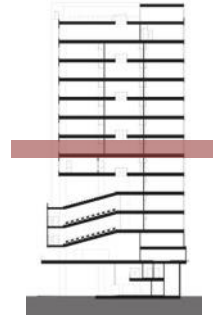
PLANTA PISO 4



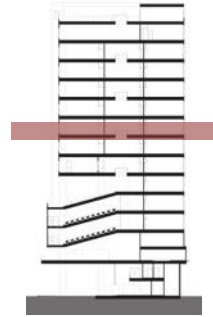
PLANTA PISO 5



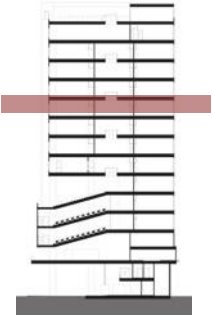
PLANTA PISO 6



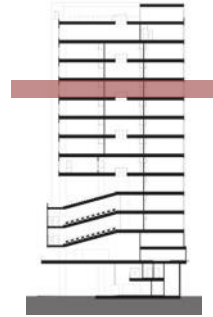
PLANTA PISO 7



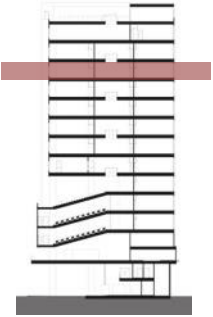
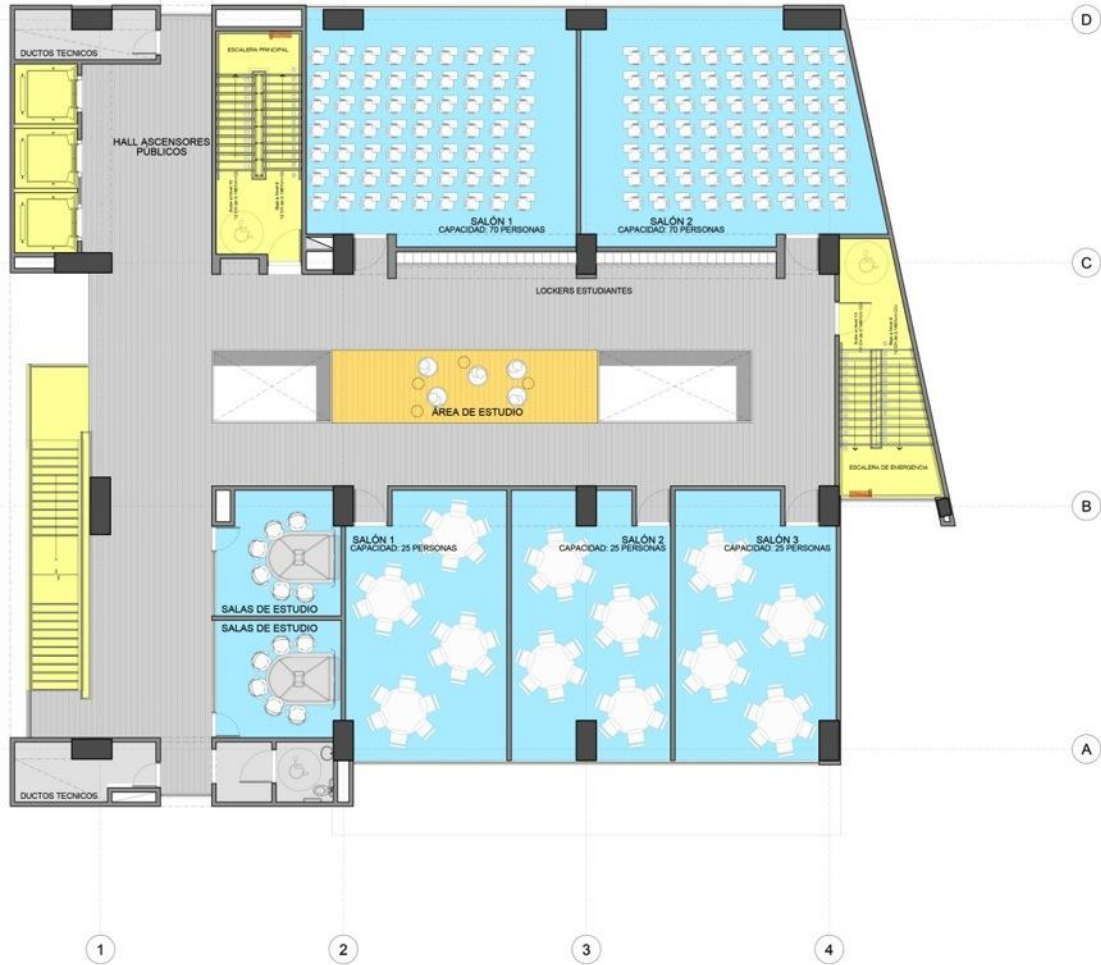
PLANTA PISO 8



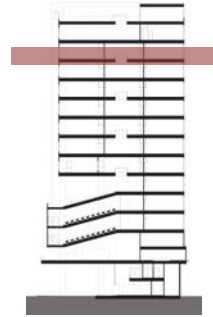
PLANTA PISO 9



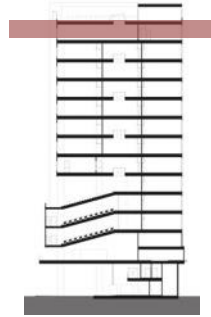
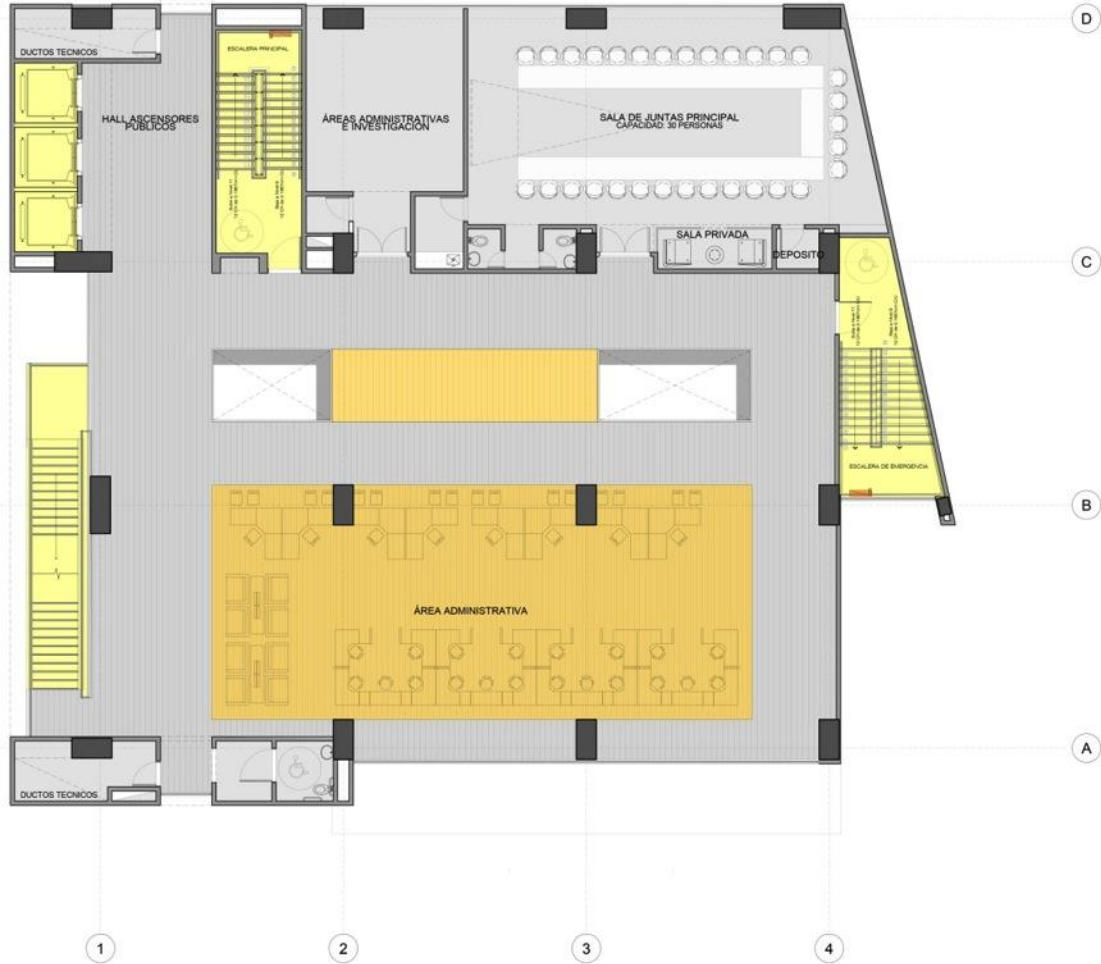
PLANTA PISO 10



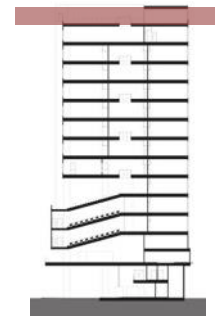
PLANTA PISO 11



PLANTA PISO 12



PLANTA PISO 13



CUADRO DE AREAS ED. DE DOCENCIA

EDIFICIO DE DOCENCIA UNIVERSIDAD CES (LOTE 4 PUG uCES)

CONDISEÑO
ARQUITECTOS



NIVELES	area	salones 120pers.	salones 70pers.	salones 35pers.	salones 25pers.	salones 15pers.	s.reuniones 30pers.	sala de estudio	camara gesell
PISO BAJO -2 (car lobby, recepción, cargue/descargue, parqueaderos accesibles)	517,46	0	0	0	0	0	0	0	0
PISO BAJO -1 (mezzanine, CES multimedia)	320,72	0	0	0	0	0	0	0	0
PISO 1 (lobby principal, cafeteria, area para estudiantes, plaza del estudiante)	826,09	0	0	0	0	0	0	0	0
PISO 2 (auditorios en tribuna, salones tipicos, areas para estudiantes, baños publicos)	826,09	2	0	3	0	0	0	0	0
PISO 3 (auditorios en tribuna, salones tipicos, areas para estudiantes, baños publicos)	826,09	2	0	3	0	0	0	0	0
PISO 4 (plaza-agona elevada, salones tipicos, areas para estudiantes, baños publicos)	826,09	0	2	0	0	0	0	0	0
PISO 5 (cámara de GESELL, salones tipicos, areas para estudiantes, baños publicos)	763,80	0	2	0	0	0	0	0	1
PISO 6 (salones tipicos, areas para estudiantes, salas de estudio)	760,53	0	0	3	3	0	0	2	0
PISO 7 (salones tipicos, areas para estudiantes, baños publicos)	763,80	0	0	3	3	0	0	0	0
PISO 8 (salones tipicos, areas para estudiantes, salas de estudio)	760,53	0	0	3	3	0	0	2	0
PISO 9 (salones tipicos, areas administrativas, baños publicos)	763,80	0	2	0	3	0	0	0	0
PISO 10 (salones tipicos, areas para estudiantes, salas de estudio)	760,53	0	2	0	3	0	0	2	0
PISO 11 (salones tipicos, areas administrativas, baños publicos)	763,80	0	2	0	3	0	0	0	0
PISO 12 (areas administrativa, sala de juntas)	760,53	0	0	0	0	0	1	0	0
PISO 13 (areas de personal)	272,53	0	0	0	0	0	0	0	0

TOTAL 10512,39 4 10 15 18 0 1 6 1



CONDISEÑO
ARQUITECTOS







Condiseño Arquitectos
Calle 1 sur #35-434 Interior 101
T: +(4) 2.66.48.93
F: +(4) 2.66.49.92
M: +(311) 617.45.08
@: cnd@condiseno.co
www.condiseno.co
Medellín – Colombia